



OUR  
FAVOURITE  
DIVE SITES

# WELCOME TO PULISAN DIVING!

WE ARE A COSY FAMILY RUN DIVE RESORT OFF THE BEATEN PATH IN NORTH SULAWESI, INDONESIA. OUR RESORT SITS IN AN EXCLUSIVE LOCATION AND OFFERS EASY ACCESS TO PRISTINE DIVE AREAS.

THE BEST DIVING SEASON FOR NORTH SULAWESI USUALLY STARTS IN APRIL AND ENDS AROUND SEPTEMBER (HIGH SEASON). FROM OCTOBER TO MARCH DURING THE RAINY SEASON, IT'S A LITTLE MORE QUIET BUT THAT DOES NOT STOP MANY DIVE ENTHUSIASTS.

WATER TEMPERATURES STAY AROUND 27°C TO 29°C WITH THE ODD THERMOCLINE DROPPING TO 23°C TO 26°C.

IF YOU ARE WONDERING WHAT TO EXPECT FROM YOUR DIVING EXPERIENCE IN NORTH SULAWESI, OUR TEAM OF SKILLED DIVE GUIDES & INSTRUCTORS HAVE COMPILED A LIST OF SELECTED DIVE SITES ESPECIALLY FOR YOU. THESE SITES ARE VERY APPRECIATED BY ALL DIVERS AND YOU WILL MOST LIKELY VISIT THEM DURING YOUR STAY.

EACH DIVE SITE IS EXPLAINED IN THE WAY OUR TEAM DIVES IT, TO GIVE YOU A REAL TASTE OF WHAT WOULD BE LIKE TO DIVE IN NORTH SULAWESI WITH PULISAN DIVING .

IF YOU HAVE ANY QUESTIONS, PLEASE REACH OUT TO OUR FRIENDLY TEAM AT ANY TIME AT [INFO@PULISANRESORT.COM](mailto:INFO@PULISANRESORT.COM)

ARE YOU READY? LET'S DIVE IN!





Pulisan Diving

INDONESIA

[www.pulisanresort.com](http://www.pulisanresort.com)

# PANTAI SILAR

# NORTH SULAWESI CAP



DIVE TYPE: MUCK/ REEF DIVE WITH A HOT SPRING



DEPTH: 30M



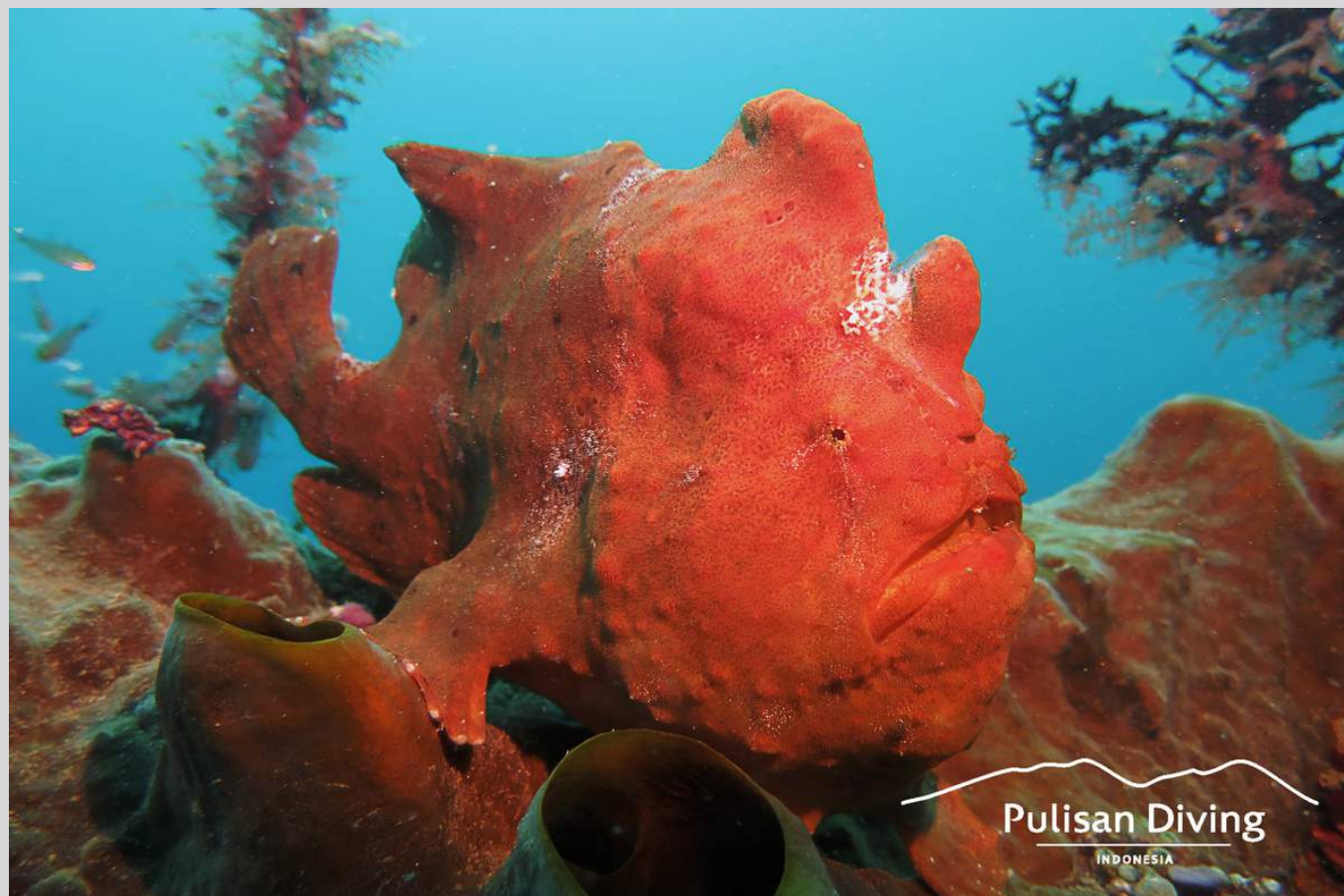
WATER TEMPERATURE: 26-29°C



EXPERIENCE LEVEL: ADVANCED OPEN WATER



DISTANCE FROM PULISAN RESORT: 15 MINS



ENTERING THE WATER FROM THE BOAT, YOU WILL FOLLOW A GENTLE SANDY SLOPE LEADING FROM NORTH TO SOUTH TO A BEAUTIFUL REEF AT AROUND 25M TO 30M. THE REEF IS HOME TO LOTS OF SNAPPER, CATFISH, FROGFISH, AND LEAF SCORPIONFISH.

LOOKING OUT INTO THE BLUE, YOU MAY SOMETIMES SEE LARGE TREVALLY OR RAINBOW RUNNERS PASSING BY. CLOSE TO, AND A LITTLE SHALLOWER THAN THE REEF, YOU WILL COME ACROSS THE FIRST HOT SPRING AT 19M, WHICH IS SURROUNDED BY SEA PEN, IN WHICH YOU CAN FIND HAIRY FROGFISH, GIANT FROGFISH, THORNY SEAHORSE, ORNATE GHOST PIPEFISH AND MANY KINDS OF NUDIBRANCH.

A LITTLE SHALLOWER STILL TOWARDS THE REEF, AT AROUND 17M, THERE'S A SECOND HOT SPRING. IN THE SANDY AREAS SURROUNDING THE SPRING, LOOK OUT FOR THE FAMOUS BLUE RINGED OCTOPUS, THE WONDERPUSS AND THE HAIRY OCTOPUS.

AT THE REEF ITSELF, ON YOUR RETURN, CHECK FOR GIANT FROGFISH AND MORE OCTOPUS. THE REEF BECOMES REALLY VARIED AND COLOURFUL WITH BOTH HARD AND SOFT CORAL AND A VARIETY OF SNAPPER.



Pulisan Diving

INDONESIA

[www.pulisanresort.com](http://www.pulisanresort.com)

# EFRATA

# NORTH SULAWESI CAP



DIVE TYPE: WALL DIVE



DEPTH: 25M



WATER TEMPERATURE: 26-29°C



EXPERIENCE LEVEL: OPEN WATER / BEGINNER



DISTANCE FROM PULISAN RESORT: 15 MINS



ENTERING THE WATER FROM THE BOAT, DESCEND TO JUST 5M AND SWIM OUT OVER THE REEF AND KEEP LEFT. THERE IS THE OPPORTUNITY FOR SOME MUCK DIVING IN THE SAND, BUT DON'T FORGET TO LOOK OUT FOR THE REMAINS OF A BOMB LEFT OVER FROM THE WAR, WHICH YOU CAN FIND AT 18M. CONTINUE LEFT, FOLLOWING THE REEF UNTIL YOU MEET A WALL.

THE DEEPEST POINT OF THE REEF IS AT 16M. IT'S OVERGROWN WITH YELLOW AND PINK SOFT CORALS, WHERE, IF YOU ARE PATIENT, YOU CAN FIND ROBUST GHOST PIPEFISH AND ORNATE GHOST PIPEFISH.

THE WALL IS ALSO HOME TO SEA MOTH, BLUE SPOTTED STINGRAY, CLOWN FROGFISH, LEAF SCORPIONFISH, COMMON SCORPIONFISH, ORANGUTAN CRAB AND OF COURSE, THE EVER-PRESENT NUDIBRANCH.

CHECK OUT THE LITTLE CAVERNS WITHIN THE WALL, THEN TURN THE DIVE AND RETURN TO THE SHALLOWS.



# Pulisan Diving

INDONESIA

[www.pulisanresort.com](http://www.pulisanresort.com)

# BATU MANDI

# NORTH SULAWESI CAP



DIVE TYPE: SANDY SLOPE TO WALL DIVE



DEPTH: 30M



WATER TEMPERATURE: 26-29°C



EXPERIENCE LEVEL: OPEN WATER (BASED ON CURRENT)



DISTANCE FROM PULISAN RESORT: 10 MINS



BATU MANDI'S NAME COMES FROM THE SEA SPRAY THROWN UP ON THE ROCKS BREAKING THE SURFACE THAT CAN BE SEEN WHEN ENTERING FROM THE BOAT.

THE DIVE CAN HAVE SOME STRONG CURRENTS – SO DROP IN AND FOLLOW THE DIVE MASTER FROM WEST TO EAST.

THE CURRENTS AND MOVEMENT CAN GET PRETTY WILD SO KEEP CLOSE TO THE WALL. LOOK OUT FOR GHOST PIPEFISH, SMALL STINGRAY, REEF OCTOPI AND PUFFERFISH WHILST HAVING AN EYE OUT IN THE BLUE FOR PASSING RAINBOW RUNNERS.

DEEPER TOWARDS THE 25M MARK, YOU MAY SEE MANY GIANT FROGFISH, PYGMY SEAHORSE HIDDEN IN FANS, AS WELL AS LOTS OF NUDIBRANCH, ORANGUTAN CRAB, BOXER CRAB, GIANT MORAY, SEA SNAKE. THE LARGE SEA FANS ARE REALLY IMPRESSIVE AT BATU MANDI.



An underwater photograph of a vibrant coral reef. The scene is dominated by a dense population of small, bright red fish swimming in the clear blue water. The coral structures are diverse, including large, branching yellowish-brown corals and smaller, more intricate purple and white formations. The lighting is bright, highlighting the colors of the marine life.

# Pulisan Diving

INDONESIA

[www.pulisanresort.com](http://www.pulisanresort.com)

# BATU BENDETTA

# NORTH SULAWESI CAP



DIVE TYPE: PINNACLE / WALL DIVE



DEPTH: 30M



WATER TEMPERATURE: 26-29°C



EXPERIENCE LEVEL: VERY EXPERIENCED DIVERS



DISTANCE FROM PULISAN RESORT: 5 MINS



BATU BENDETTA PINNACLE IS ONLY AROUND 200M FROM MAINLAND. FOR THIS DIVE, YOU WILL DROP IN ON NORTH SIDE AND FOLLOW TOWARDS THE EAST, BEFORE TURNING AND RETURNING TO THE BOAT.

THIS PINNACLE IS THE PLACE FOR BIGGER FISH, FOR EAGLE RAY, WHITE AND BLACK TIP SHARK, FUSILIERS AND TREVALLIES. THERE IS A LOT OF HARD CORAL, SO LOOK OUT FOR LONGNOSE HOGFISH, AND OF COURSE THE MANY NUDIBRANCH.

YOU MAY ALSO BE ABLE TO SEE REEF OCTOPUS AND GREEN AND HAWKSBILL TURTLE. MANTA RAYS HAVE BEEN SPOTTED AROUND JUNE TIME.

CURRENTS CAN BE VERY CHALLENGING DUE TO THE CELEBES AND MOLUCCA SEAS MERGING, SO THIS SITE IS OPEN TO EXPERIENCED DIVERS ONLY.

BATU BENDETTA IS APPARENTLY NAMED AFTER A PASTOR WHO WENT FISHING, BUT LOST HIS LIFE IN A STORM AT THE ROCK.

A large grey reef shark is the central focus, swimming horizontally across the frame from left to right. It has a sleek, grey body with a white underbelly and a distinctive black spot on the dorsal fin. The shark is positioned above a vibrant coral reef that features various colors of coral and sponges. The water is a deep, clear blue, and numerous small, silvery fish are scattered throughout the scene, some swimming near the shark and others in the background. The overall atmosphere is serene and highlights the natural beauty of the underwater ecosystem.

# Pulisan Diving

INDONESIA

# BATU PUNTENG

# NORTH SULAWESI CAP



DIVE TYPE: PINNACLE / WALL DIVE



DEPTH: 25-28M



WATER TEMPERATURE: 26-29°C



EXPERIENCE LEVEL: OPEN WATER - ADVANCED



DISTANCE FROM PULISAN RESORT: 15 MINS



ENTER THE WATER IN FRONT OF THE ROCK “BATU PUNTENG” WHICH MEANS “SEAGULL ROCK” AFTER THE MANY BIRDS THAT FLY HERE TO ROOST.

THE CURRENT IS GENERALLY FROM WEST, SO DESCEND TO 12-15M WITH THE REEF TO YOUR RIGHT, NOTING THE CORAL SLOPE OUTSIDE THE REEF. CONTINUE THE DIVE FOLLOWING THE WALL DOWN AND LEAVE THE SANDY AREA TO YOUR LEFT.

AT AROUND 15-20M PASS BY SOME LOVELY BLACK CORAL AND YELLOW SEA FANS. DESCENDING FURTHER DOWN THE WALL, LOOK OUT FOR THE FISSURE OR CHIMNEY AT AROUND 25M. KEEP THE WALL ON THE RIGHT-HAND SIDE AS YOU PASS BY LARGE BOULDERS AND REACH THE CORNER.

AT THIS POINT, THE CURRENT MAY BE AGAINST YOU, SO ASCEND TO AROUND 16M AND STAY CLOSE TO THE WALL. TURN THE DIVE AND CONTINUE ALONG THE LEDGE, THIS TIME KEEPING THE WALL/ REEF TO YOUR LEFT HAND SIDE. JUST AFTER PASSING THE OVERHANG AT AROUND 10M, YOU CAN CROSS OVER THE SADDLE AT THE RIDGE TO REACH THE OTHER SIDE OF THE PINNACLE.

EXIT THE DIVE HERE CLOSE TO THE ENTRY POINT, ALTERNATIVELY DRIFT WITH THE CURRENT TOWARDS THE NORTH WEST AND FLY OVER THE REEF IF THE CURRENT IS STRONG ENOUGH.

ON THIS PINNACLE AND WALL, LOOK OUT FOR FUSILIER FISH, EAGLE RAY OUT IN THE BLUE AND SEAHORSE IN THE DEEPER SOFT CORAL.



Pulisan Diving

INDONESIA

[www.pulisanresort.com](http://www.pulisanresort.com)

# TELUK KAMBAHU

# LEMBEH STRAIT



DIVE TYPE: BLACK SAND / SLOPE / MUCK DIVE



DEPTH: 3-25M



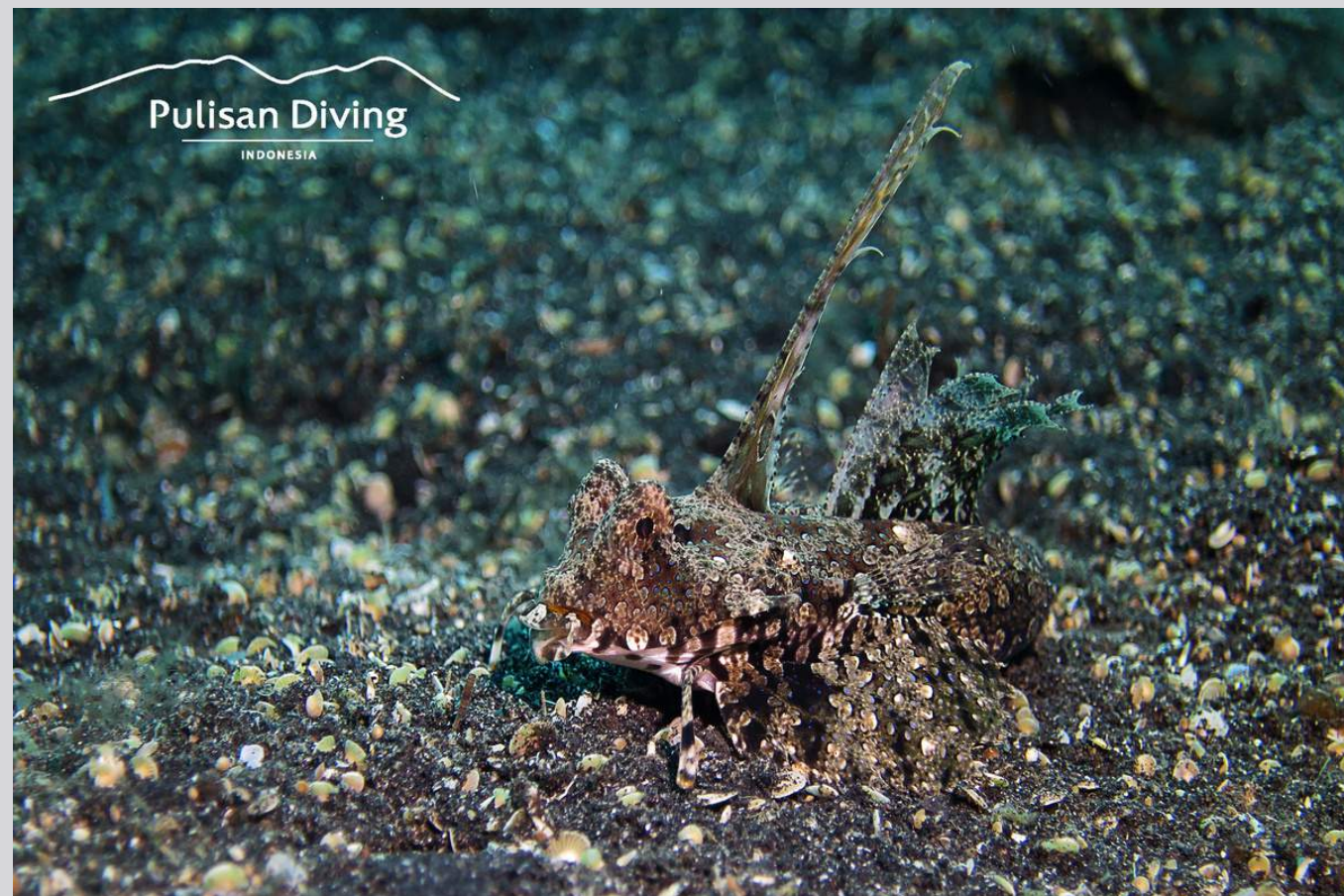
WATER TEMPERATURE: 26-29°C



EXPERIENCE LEVEL: OPEN WATER - ADVANCED



DISTANCE FROM PULISAN RESORT: 50 MINS



NAMED AFTER THE VILLAGE IN THE BAY, YOU'LL ENTER OFF THE BOAT INTO SHALLOW WATER AND WILL DESCEND OVER A DARK SANDY BOTTOM. SLOPING GENTLY TO 25M WITH A GREAT CHANCE OF SEEING MANY DIFFERENT TYPES OF PIPEFISH, FROM ORNATE TO ROBUST. TO DIVE HERE IS TO SNOOP THROUGH THE RUBBLE IN AND AROUND SUNKEN BITS OF WOOD AND NETS. YOU COULD POSSIBLY RUN INTO COUNTLESS CREATURES.

HOPPING ALONG THE FLOOR WITH CLAW LIKE FINS, A SEA MOTH WILL PROBE WITH ITS LONG NOSE FOR FOOD IN THE SOFT MUDDY BOTTOM, LEVITATING BRIEFLY TO SCOUT ITS TERRITORY. HELMUT'S FLYING GURNARDS GLIDE SLOWLY UNTIL THEY UNFURL THEIR FINS LIKE WINGS AND STREAK DOWN A SANDY SLOPE.

RESPLENDENT IN ART NOUVEAU CAMOUFLAGE, LEAF SCORPIONFISH WILL YAWN AS YOU APPROACH, CONFIDENT IN THE EFFECTS OF THEIR DEADLY SPINES.

APART FROM MANY WRASSES, PUFFER FISH AND ANEMONE FISH, ON THIS LEMBEH MUCK DIVING SITE EXTRAORDINAIRE YOU MIGHT COME ACROSS TO A MYRIAD OF COLOURFUL AND UNUSUAL CREATURES SUCH AS: MANDARIN FISH, BANGGAI CARDINAL FISH (ENDEMIC TO THIS REGION), WHITE DEVIL SCORPION FISH, SPINY DEVIL FISH, JUVENILE HARLEQUIN SWEETLIPS, GIANT FROG FISH, PAINTED FROG FISH, PORCELAIN CRABS, PURPLE COMMENSAL SHRIMPS, FINGER DRAGONET, YELLOW BARRED JAW FISH, RAZOR FISH, SNOWFLAKE MORAY EEL. RIBBON EEL. THE LIST OF LIKELY NUDIBRANCH SIGHTINGS IS LONGER STILL!



Pulisan Diving

INDONESIA

[www.pulisanresort.com](http://www.pulisanresort.com)

# BATU TIGA

# BANGKA ISLAND



DIVE TYPE: PINNACLE



DEPTH: 30M+



WATER TEMPERATURE: 29°C



EXPERIENCE LEVEL: ADVANCED



DISTANCE FROM PULISAN RESORT: 25 MINS



BATU TIGA MEANS “THREE ROCKS” AFTER THE THREE PINNACLES: TWO PINNACLES ARE ABOVE THE SURFACE OF THE WATER, THE THIRD IS SUBMERGED. THERE ISN'T USUALLY ANY CURRENT ON THIS DIVE, WHICH STARTS ON A SANDY SLOPING REEF WHERE YOU CAN FIND MORAYS, SCORPIONFISH, SMALL REEF FISH AND NUDIS.

FOLLOW THE REEF DOWN AND SWIM IN A SOUTHERLY DIRECTION TO FIND THE SUBMERGED PINNACLE AT AROUND 14M. SWIM AROUND IT AND IT GOES DOWN TO ABOUT 29M. EITHER GO AROUND PINNACLE AND TURN BACK TOWARDS THE NORTH ENDING DIVE AT THE ENTRY POINT – OR ALTERNATIVELY, TURN EAST WHERE THE PINNACLE TURNS INTO A WALL CONNECTING WITH THE PINNACLE THAT'S OUT OF THE WATER.

YOU MAY SEE GIANT FROGFISH, MORAY, GLASSFISH, BATFISH, SNAPPER OR REDTOOTH TRIGGERFISH. ALSO, LOOK OUT FOR THE RARE, WHITE COLONIAL ANEMONES ON THE REEF.





# Pulisan Diving

INDONESIA



# SAHAOUNG



DIVE TYPE: PINNACLE



DEPTH: 30M+



WATER TEMPERATURE: 29°C



EXPERIENCE LEVEL: ADVANCED



DISTANCE FROM PULISAN RESORT: 30 MINS



# BANGKA ISLAND

SWIM ALONG REEF AND UNDERWATER PINNACLES TOWARDS SOUTH, ENDING UP ON A PLATEAU WITH TABLE CORAL – CHECK UNDERNEATH FOR LURKING WHITETIPS, EAGLE RAYS, DEVIL RAYS. THERE ARE SOME LOVELY GORGONIAN SEA FANS HERE ON THIS SITE.

OUT IN THE BLUE CHECK FOR FUSILIERS, REDTOOTH TRIGGERFISH AND SNAPPER. THIS SITE MAY WELL HAVE A LOT OF SURGE AND SWELL AS WELL AS SOME STRONG CURRENT, THEREFORE WE ADVISE ONLY ADVANCED DIVERS ON THIS SITE.





Pulisan Diving

INDONESIA

[www.pulisanresort.com](http://www.pulisanresort.com)

# BATU DUGONG

# BANGKA ISLAND



DIVE TYPE: WHITE SAND MUCK DIVE



DEPTH: 26M+



WATER TEMPERATURE: 29°C



EXPERIENCE LEVEL: OPEN WATER - ADVANCED



DISTANCE FROM PULISAN RESORT: 25 MINS



BATU DUGONG, IS A WHITE SAND MUCK DIVE. START THE DIVE AT THE BUOY LINE AT 5-6M AND DESCEND THE SANDY SLOPE – VEERING EAST TO AROUND 24-26M WHERE THERE ARE LOTS OF SPONGES, SEA GRASS AND GREEN ALGAE IN THE SAND.

CONTINUE THE DIVE IN A ZIGZAG ON THE SLOPE AND RETURN TO START OF DIVE AT THE BUOY LINE.

ON THIS DIVE SITE, YOU CAN FIND MANY SMALL CRITTERS LIKE THE AWESOME DOUNUT NUDI, THE SHEEP LEAF NUDI, PIPEHORSE, PYGMY PIPEHORSE, TINY FROGFISH, LONGARM OCTOPUS, FLAMBOYANT CUTTLFISH, SHRIMP, CRAB AND COMMON REEF FISH AND STINGRAYS.

IF YOU ARE VERY LUCKY, YOU MIGHT ENCOUNTER A DUGONG MUNCHING ON SOME SEAGRASS.



WE HOPE YOU HAVE ENJOYED READING OUR GUIDE, AND THAT WE HAVE MADE YOU EXCITED ABOUT COMING TO EXPERIENCE NORTH SULAWESI WITH PULISAN DIVING.

WE OFFER DAILY TRIPS IN OUR NEW COMFORTABLE BOAT. YOU WILL JOIN A SMALL GROUP OF FUN DIVERS GUIDED BY ONE OF OUR EXPERIENCED DIVE GUIDES.

NOT CERTIFIED YET? PULISAN DIVING OFFERS IN DEPTH DIVE TRAINING SERVICES WITH SSI & PADI.

NOT SURE IF SCUBA DIVING IS FOR YOU? START EASY AND TAKE THE PLUNGE WITH DISCOVER SCUBA DIVING TO GET COMFORTABLE IN THE SEA AND DISCOVER ALL ITS INCREDIBLE CREATURES.

YOUR JOURNEY STARTS HERE.

DO YOU HAVE ANY QUESTIONS? WOULD YOU LIKE TO KNOW THE LATEST UPDATES ABOUT TRAVELLING TO INDONESIA?

GET IN CONTACT WITH OUR FRIENDLY TEAM AT [INFO@PULISANRESORT.COM](mailto:info@pulisanresort.com), THEY WILL BE HAPPY TO ANSWER ALL YOUR QUESTIONS AND MAKE YOUR NEXT HOLIDAY PLANNING AS SMOOTH AS POSSIBLE.

WE LOOK FORWARD TO DIVING WITH YOU!

THE PULISAN RESORT FAMILY



# Pulisan Diving

INDONESIA